

## Specyfikacja modelu

Zdumiewająca przecinarka RAPTOR380 tnie stal, aluminium i stal nierdzewną bez przenoszenia ciepła na materiał, przypaleń i konieczności stosowania chłodziwa. Silnik o mocy 2200W gotowy do wymagających prac. Przecinarka gotowa do transportu. Zapewnia najczystszy, najszybszy i najbardziej ekonomiczny sposób cięcia miękkich stali. Idealna do cięcia profili zamkniętych, belek, rur stalowych, rusztowań. 12 miesięcy gwarancji.

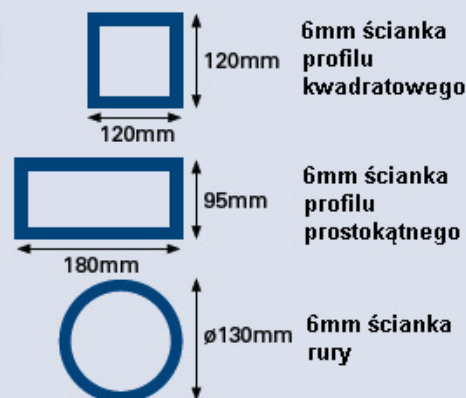
Silnik (230v~lub 115v ~ 50/60 Hz):	2200w
Profil kwadratowy (max ścianka 6mm) 90°:	120 x 120mm
Profil kwadratowy (max ścianka 6mm) 45°:	89 x 89mm
Profil prostokątny (max ścianka 6mm) 90°:	95 x 180mm
Profil prostokątny (max ścianka 6mm) 45°:	78 x 110mm
Rura (max ścianka 6mm) 90°:	130mm
Rura (max ścianka 6mm) 45°:	105mm
Prędkość bez obciążenia:	1300min-1
Zalecany maks. czas pracy:	30 mins
Poziom hałasu (przy obciążeniu):	112.4 dB(A)
Waga:	23kg
Maksymalne wymiary: (wysokość x szerokość x długość)	575 x 355 x 600mm

## Specyfikacja tarczy

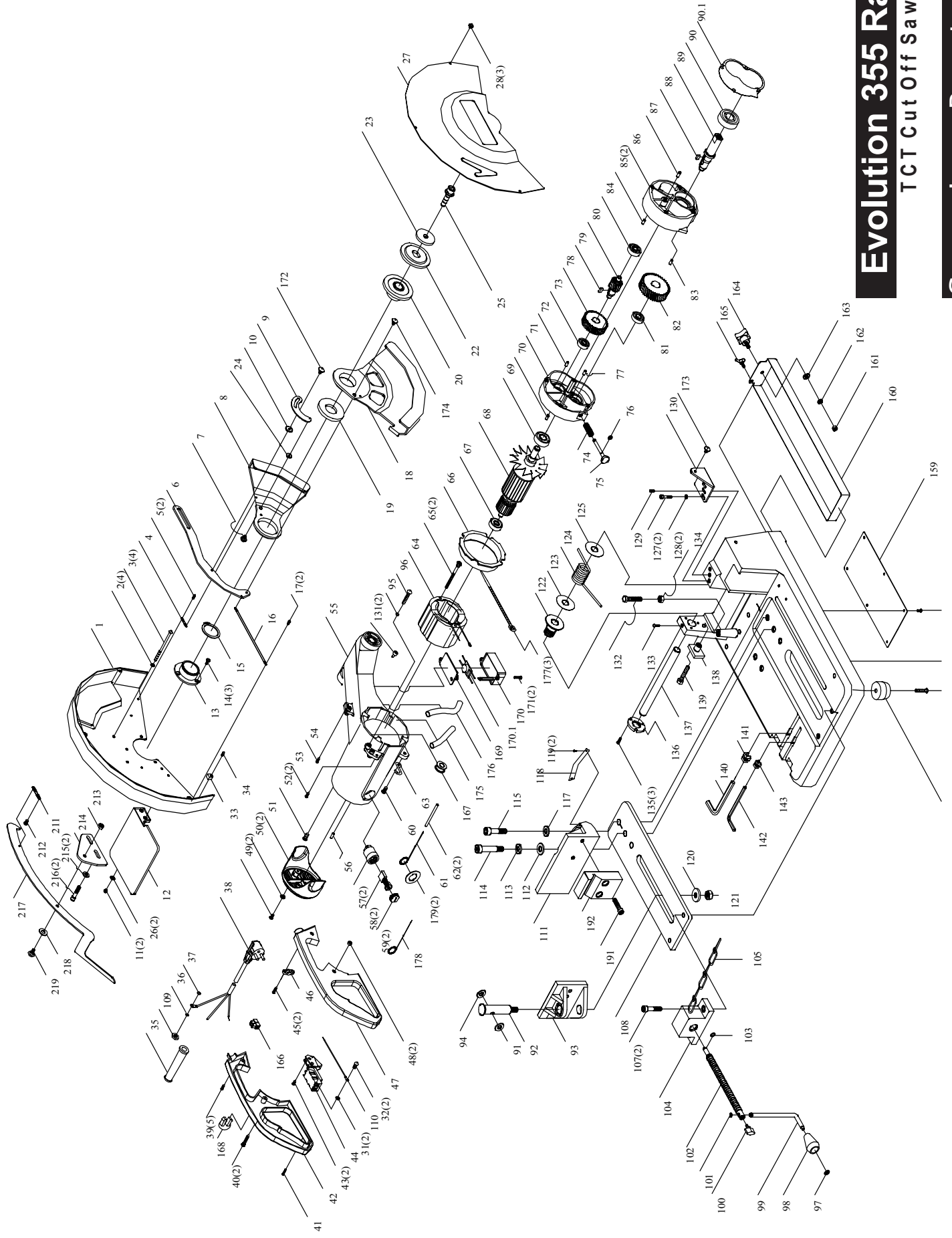
Maksymalna średnica:	380mm
Średnica otworu:	25.4mm
Grubość:	2.4mm

## Standardowe wyposażenie

Zestaw zawiera: klucz imbusowy 8mm, klucz imbusowy 6mm, okulary ochronne, stopery do uszu



**ORYGINALNA I NAJLEPSZA  
PRZECINARKA TARCZOWA  
DO STALI**



# Evolution 355 Raptor

TCT Cut Off Saw

## Service Parts List

153(2) 157 158(6)

# Evolution 355 Raptor

TCT Cut Off Saw

## Service Parts List

Item	Description	Part No.	Qty/Machine	List £
1	SAFETY COVER	DRY0513020107-110	1	39.87
2	TOOTH LOCK WASHER	DRY412091001	4	1.02
3	HEX SOCFLAT HD SOR	DRY0513020812	4	1.02
4	SPRING	DRY0513020901	1	1.75
5	M4x8MM PAN HD SCREW	DRY0513020801	2	1.02
6	LEVER	DRY0513020301	1	11.17
7	SHOULDER SCREW	DRY0513020802	1	1.02
8	SMALL BLADE GUARD	DRY0513020106-57	1	17.47
9	LEVER	DRY0513020303	1	4.73
10	SPACER	DRY0513020902	1	1.02
11	PAN HD SCREW + WASHER	DRY410251001	2	1.02
12	PROTECTION PLATE	DRY0513020201	1	7.67
13	BEARING COVER	DRY0513021401	1	7.67
14	FLAT HD SCREW	DRY410101006	3	1.02
15	EXTL RETAINING RING	DRY413011006	1	1.89
16	SPRING	DRY0513020913	1	3.47
17	SCREW (M4X8mm)	DRY0513020801	2	1.02
18	BIG BLADE GUARD	DRY0513020102-57	1	23.07
19	SPACER	DRY0513020304	1	2.84
20	FLANGE	DRY0513021402	1	7.67
22	FLANGE	DRY0513021403	1	7.67
23	M10 FLAT WASHER	DRY0502020305	1	2.07
24	SPACER	DRY0513020924	1	1.02
25	HEX SOC HD SCREW +WASHER	DRY410341003	1	1.37
26	FLAT WASHER	DRY412011006	4	1.02
27	COVER	DRY0513020305-110	1	15.37
28	PAN HD SCREW + WASHER	DRY410251001	3	1.02
31	TOOTH LOCK WASHER EXT'	DRY412042003	4	0.67
32	PAN HD SCREW	DRY410316702	2	0.67
33	STOP	DRY0301010203	2	1.02
34	PAN HD SCREW	DRY410131008	1	0.67
35	CORD GUARD	DRY0502020206	1	1.02
36	PAN HD SCREW M5x18	DRY410132016	1	0.67
37	TOOTH LOCK WASHER EXT'	DRY412042001	1	0.67
38	POWER CORD	DRY0502020702	1	6.27
39	SELF-TAP PAN HD SCREW	DRY410192002	4	0.67
40	PAN HD SCREW + WASHER	DRY410261001	2	0.67
41	SELF-TAP PAN HD SCREW	DRY410192701	1	0.67
42	D HANDLE-LEFT HAND	DRY0502020219-58	1	8.37
43	SELF-TAP PAN HD SCREW	DRY410192001	2	0.67
44	SWITCH	DRY452070101	1	22.37
45	SCR PN CR M4X1.4-16	DRY410191002	2	0.67
46	CORD CLAMP	DRY0101040203	1	0.67
47	D HANDLE-RIGHT HAND	DRY0502020220-58	1	8.37
48	HEX NUT	DRY411012001	2	0.67
49	PAN HD SCREW M5x12	DRY410132004	2	0.67
50	LOCK WASHER	DRY412022005	2	1.02
51	END COVER	DRY0502020317	1	6.27
52	PAN HD SCREW M5x12	DRY410132004	2	0.67

# Evolution 355 Raptor

TCT Cut Off Saw

## Service Parts List

Item	Description	Part No.	Qty/Machine	List £
53	SELF-TAP PAN HD SCREW	DRY410192002	1	1.02
54	SELF-TAP PAN HD SCREW	DRY410192002	1	1.02
55	MOTOR HOUSING	DRY0502020104-111	1	44.00
56	RUBBER PIN	DRY414060001	1	1.02
57	BRUSH HOLDER	DRY0602200208	2	6.27
58	BRUSH	DRY0502025002	2	12.92
59	BRUSH CAP	DRY0602200209	2	1.58
60	SHOULDER SCREW	DRY0513020807	1	0.67
61	JUMPER WIRE	DRY0502021101	1	1.37
62	SLEEVING	DRY0502021103	1	1.37
63	CHAIN HOOK	DRY0513020912	1	1.37
64	FIELD ASS'Y 110V	DRYA502020422	1	39.87
64A	FIELD ASS'Y 230V	DRYA502020424	1	39.87
65	HEX HD SCREW + WASHER	DRY410351001	2	1.02
66	BAFFLE	DRY0502020203	1	4.80
67	BALL BEARING	DRY420010004	1	9.77
68	ARMATURE 110V	DRYA513020301	1	64.72
68A	ARMATURE 230V	DRYA513020302	1	64.72
69	BALL BEARING	DRY420010005	1	9.77
70	RUBBER PIN	DRY414060001	1	0.67
71	INNER GEAR HOUSING	DRY0513020104-111	1	19.22
72	STOP	DRY414060003	1	1.02
73	BALL BEARING	DRY420010108	1	9.77
74	SPRING	DRY0513020909	1	1.02
75	LOCK PIN	DRY0513020908	1	3.47
75A	LOCK PIN	DRY0513020614	1	1.65
76	E-RING (ETW)	DRY413051003	1	0.67
77	STOP	DRY414060003	1	0.67
78	FRONT GEAR	DRY0513021001	1	18.52
79	SQUARE KEY	DRY415030002	1	0.90
80	GEAR SHAFT	DRY0513021002	1	17.01
81	BALL BEARING	DRY420010102	1	9.77
82	BACK GEAR	DRY0513021003	1	20.97
83	STOP	DRY414060003	1	0.67
84	BALL BEARING	DRY420010004	1	9.77
85	PIN	DRY0513020921	1	1.02
86	OUTER GEAR HOUSING	DRY0513020105-111	1	19.22
87	PIN	DRY0513020911	1	0.67
88	SQUARE KEY	DRY415030002	1	1.02
89	SPINDLE	DRY0513020603	1	13.62
90	BALL BEARING	DRY420010111	1	13.27
90A	SEAL	DRY0513025005	1	1.02
91	FLAT WASHER	DRY412011016	1	0.67
92	PIN	DRY0513020601	1	5.92
93	WISE JAW	DRY0513020401-58	1	23.07
94	FLAT WASHER	DRY412011016	1	0.67
97	SELF-LOCKING NUT	DRY411101001	1	0.67
98	KNOB	DRY0502020211	1	2.00
99	HANDLE	DRY0513020903	1	4.87

# Evolution 355 Raptor

TCT Cut Off Saw

## Service Parts List

Item	Description	Part No.	Qty/Machine	List £
100	PLASTIC KNOB	DRY0513020811	1	1.02
101	RING	DRY0513020904	1	1.02
102	VICE SCREW	DRY0513020805	1	8.72
103	PIN	DRY414021001	1	1.05
104	SUPPORT	DRY0513020402-58	1	15.72
105	CHAIN	DRY0502025001-23	1	1.02
107	HEX SOC HD SCREW +WASHER	DRY410341002	2	2.07
108	SETTING UP PIECE	DRY0513020306	1	17.47
109	PAN HEAD SCREW	DRY410132004	1	0.67
110	JUMPER WIRE	DRY0502021107	1	1.02
111	VICE PLATE	DRY0513020403-58	1	27.27
112	FLAT WASHER	DRY412011017	1	1.02
113	LOCK WASHER	DRY412021006	1	0.67
114	BOLT	DRY0513020806	1	2.77
115	HEX SOC HD SCREW +WASHER	DRY410341005	1	1.37
117	WASHER FLAT	DRY412011018	1	1.37
118	SCALE	DRY0513025003	1	-
119	DRIVE SCREW	DRY410503001	2	0.67
120	WASHER	DRY0513020905	1	1.02
121	NYLON NUT	DRY411071004	1	0.67
122	ADJUSTING BUSHING	DRY0513021404	1	5.50
123	FLAT WASHER	DRY0513020307	1	1.02
124	SPRING	DRY0513020906	1	6.97
125	FLAT WASHER	DRY0513020307	1	0.67
127	HEX SOC HD SCREW +WASHER	DRY410342001	2	1.02
128	FLAT WASHER	DRY412011029	2	0.67
129	SET SCREW	DRY410071004	1	0.67
130	BRACE BRACKET	DRY0513020309	1	3.82
131	WIRE CONNECT	DRY451020002	1	1.02
132	M8x45MM HEX HD SCREW	DRY410011007	1	1.02
133	SET SCREW	DRY410071009	1	1.02
134	NUT M8x1.25	DRY411011003	1	1.02
135	PAN HD SCREW + WASHER	DRY410251001	3	1.02
136	NUT	DRY0513020310	1	4.17
137	SHAFT	DRY0513020602	1	15.30
138	SPECIAL NUT	DRY0513020503	1	4.73
139	M8x45MM HEX HD SCREW	DRY410011007	1	0.67
140	8MM HEX WRENCH	DRY0513020312	1	1.02
141	WRENCH HOLDER	DRY0513020203	1	0.67
142	6MM HEX WRENCH	DRY0513020311	1	1.02
143	WRENCH HOLDER	DRY0513020202	1	0.67
153	PAD	DRY0513021301	1	4.80
156	PAN HD SCREW + WASHER	DRY410272005	1	0.67
157	BASE	DRY0513020103-111	1	61.22
158	PAN HD SCREW + WASHER	DRY410251001	6	0.67
159	SUPPORT PLATE	DRY0513020313	1	8.93
160	CHIP BOX	DRY0513020314	1	12.22
161	NUT	DRY4110012701	1	0.67
162	FLAT WASHER	DRY412012712	1	0.67

# Evolution 355 Raptor

TCT Cut Off Saw

## Service Parts List

Item	Description	Part No.	Qty/Machine	List £
163	LOCK WASHER	DRY412022702	1	0.67
164	KNOB	DRY0201010203	1	6.27
165	WING SCREW	DRY410221002	1	4.17
167	CABLE GROMMET	DRY0513020219	1	0.67
168	COVER	DRY0513020205	1	0.67
169	FILTER CAP	DRY0513020316	1	2.63
169A	SET SCREW	DRY410071011	1	0.67
170	FILTER BOX	DRY0513020206	1	3.40
170A	PIN	DRY0513020922	1	1.37
170.1	FILTER	DRY0502021203	1	20.06
171	SCREW M4	DRY410132004	2	0.67
172	SHOULDER SCREW	DRY0513020915	1	1.37
173	SHOULDER SCREW	DRY0513020916	1	1.02
174	SHOULDER SCREW	DRY0513020917	1	1.02
177	CABLE TIE	DRY0513020204	2	0.67
178	JUMPER WIRE	DRY0502021104	1	1.37
179	FIBRE PLATE	DRY0502025004	2	1.37
191	HEX HEAD SCREW	DRY410151008	4	1.02
192	V-JIG VISE	DRY0513025001	1	20.97
211	SPRING	DRY0513020919	1	1.02
212	M4x8MM PAN HD SCREW	DRY0513020801	1	1.02
213	NUT HEX M5x0.8	DRY411011001	1	0.67
214	BRACE BRACKET	DRY0513020330	1	1.93
215	FLAT WASHER	DRY412011019	2	0.67
216	HEX HEAD SCREW + WASHER	DRY410341004	2	1.02
217	LEVER	DRY0513020329	1	8.37
218	WASHER FLAT D8	DRY412011008	1	0.67
219	SHOULDER SCREW	DRY0513020915	1	1.37

HiTech Evolution Europe Ltd

Evolution House, New Street, Holbrook Industrial Estate, Sheffield, S20 3GH, UK

Tel: +44 (0) 114 251 1022 Fax: +44 (0) 114 247 3339

[www.evolutionpowertools.com](http://www.evolutionpowertools.com)